

05TA Series Parts List
(P118 "C" Series)

Note: The 05TA (P118F "C"-Series) began production in late 1997 with Cutler-Hammer control panel components. In mid-1999, the control panel was changed to include Allen-Bradley I.E.C. components.

Control Panel Components (Allen Bradley Panel)

<u>Part Number</u>	<u>Req'd</u>	<u>Description</u>
12A7500E61	1	A/B SELECTOR SWITCH, 3 POSITION "Ice/Off/Clean" Selector Switch
12A7500E77	1	CONTACT BLOCK/MOUNTING LATCH, 2-NO, 1-NC
12A7500E56	1	A/B PUSH BUTTON SWITCH (GREEN) "Start" Push-Button Switch
12A7500E73	1	CONTACT BLOCK/MOUNTING LATCH, 2-NO Contacts for "Start" Switch
12A7500E57	1	A/B PUSH BUTTON SWITCH (RED) "Stop" Push-Button Switch
12A7500E76	1	CONTACT BLOCK/MOUNTING LATCH, 1-NC Contacts for "Stop" Switch
12A7503E22	1	THAW TIMER, 8 PIN PLUG-IN, 100-240V., 50/60HZ Replaces all other timers (includes base below)
12A7503E2201	1	TIMER BASE #0T08-PC, EIGHT PIN PLUG-IN
12B7503E18	1	ELAPSED TIME INDICATOR, 230V, 60HZ PANEL MOUNT
12B7503E17	1	ELAPSED TIME INDICATOR, 220V, 50HZ PANEL MOUNT
12A7515E21	1	CONTROL CIRCUIT CIRCUIT BREAKER, 3 AMP, 2-POLE
12A7517E27	1	A/B RELAY, 10A, 2-NO/2-NC, 208/240 "CR" Relay
12A7516E23	1	A/B CONTACTOR, 9-AMP, 3-POLE, 208/240V W/1-NO AUX Power Failure Relay
12A2117E04	1	FREEZER PRESSURE SWITCH-R22
12A7516E30	1	A/B CONTACTOR, 72AMP, 3-POLE, 208/240V COIL Compressor Motor Contactor (CC)
12A7518E30	1	A/B AUX. CONTACT, 3A, 1 NO/1 NC, (SIDE MOUNT)
12A7518E31	1	A/B AUX. CONTACT, 3A, 2 NO, (SIDE MOUNT)
12A7518E32	1	A/B AUX. CONTACT, 5A, 2 NO, TOP MOUNT
12A7515E08	1	CIRCUIT BREAKER, 15 AMP. WESTINGHOUSE Cutter/Pump Circuit Breaker or Air-Cooled Cond-400/460v
12A7515E09	1	CIRCUIT BREAKER, 30 AMP. WESTINGHOUSE Air-Cooled Condenser Circuit Breaker-208/230v
12A7516E23	2	A/B CONTACTOR, 9-AMP, 3-POLE, 208/240V W/1-NO AUX Cutter/Pump Contactor

**05TA Series Parts List
(P118 "C" Series)**

Control Panel Components (Con'd) (Allen Bradley Panel)

<u>Part Number</u>	<u>Req'd</u>	<u>Description</u>
12A7518E33	2	A/B AUX. CONTACT, 6A, 1 NO, SIDE MOUNT Cutter/Pump Contactor Auxillary Contact
12A7530E54	1	MANUAL MOTOR STARTER, 1.6-2.5 AMP OVERLOAD Cutter Motor-208/230v or Water Pump-460v
12A7530E56	2	MANUAL MOTOR STARTER, 4.0-6.3 AMP OVERLOAD Water Pump-208/230v
12A7530E52	2	MANUAL MOTOR STARTER, 0.63-1.0 AMP OVERLOAD Cutter Motor-460v
12A7530E53	2	MANUAL MOTOR STARTER, 1.0-1.6 AMP OVERLOAD Cutter Motor-400v, 50hz
12A7530E55	2	MANUAL MOTOR STARTER, 2.5-4.0 AMP OVERLOAD Water Pump-400v, 50hz
12A7516E26	1	A/B CONTACTOR, 23-AMP, 3-POLE, 208/240V W/1-NC AUX Condenser Fan Contactor (Air-cooled only)
12D2590G08	1	GAGE, 2.5" LQD FILLED, 30"-150 Freezer Pressure Gage
12D2590G09	1	GAGE, 2.5" LQD FILLED, 30"-400 Condenser Pressure Gage

Control Panel Components (Cutler-Hammer Panel)

<u>Part Number</u>	<u>Req'd</u>	<u>Description</u>
12A7500E08	2	SWITCH, TOGGLE, STEMCO #1145, "Ice/Clean" toggle switch or "On/Off" toggle switch
12A7500E17	1	C/H PUSH-BUTTON SWITCH (GREEN) W/START NAMEPLATE
12A7518E03	1	C/H CONTACT BLOCK FOR PUSH-BUTTON SW (1-N/O,1-N/C) Secondary contact for "Start" push-button switch
12A7500E15	1	C/H PUSH-BUTTON SWITCH (RED) W/STOP NAMEPLATE
12A7503E22	1	THAW TIMER, 8 PIN PLUG-IN, 100-240V., 50/60HZ Replaces all other timers (includes base below)
12A7503E2201	1	TIMER BASE #0T08-PC, EIGHT PIN PLUG-IN
12B7503E18	1	ELAPSED TIME INDICATOR, 230V, 60HZ PANEL MOUNT
12B7503E17	1	ELAPSED TIME INDICATOR, 220V, 50HZ PANEL MOUNT
12A7502E07	2	FUSE HOLDER,LITTEL FUSE SHOCK
12A7504E1	2	CONTROL CIRCUIT FUSE,2.5 AMP (ORDER MULTIPLES OF 5)
12A7517E18	1	C/H RELAY #D15CRY1 (W/ 2-N/O, 2-N/C) "CR" Relay, replaces Furnas 12A7517E15 & P/B 12A7517E08
12A7516E09	1	CONTACTOR / CUTLER-HAMMER 2-POLE, 10AMP Power Failure Relay

**05TA Series Parts List
(P118 "C" Series)**

Control Panel Components (Con'd) (Cutler-Hammer Panel)

<u>Part Number</u>	<u>Req'd</u>	<u>Description</u>
12A2117E04	1	FREEZER PRESSURE SWITCH-R22
12A7516E22	1	CONTACTOR C/H #CE15KN3B, 3 POLE, 220/240V Compressor Motor Contactor (CC)
12A7518E15	1	AUX CONTACT / CUTLER-HAMMER #C32OKGS3, 1-NO/1-NC
12A7518E16	1	AUX CONTACT / CUTLER-HAMMER #C32OKGS4, 2-NO
12A7518E21	1	AUX CONTACT / CUTLER-HAMMER #C32OKGT4, 2-NO
12A7515E08	1	CIRCUIT BREAKER, 15 AMP. WESTINGHOUSE Cutter/Pump Circuit Breaker or Air-Cooled Cond-400/460v
12A7515E09	1	CIRCUIT BREAKER, 30 AMP. WESTINGHOUSE Air-Cooled Condenser Circuit Breaker-208/230v
12A7530E11	2	C/H STARTER #AE16BNY, 3-POLE Cutter/Pump Motor Starter
12A7518E16	1	AUX CONTACT / CUTLER-HAMMER #C32OKGS4, 2-NO
12A7508H2006	1	C/H HEATER PACK #H2006B 1.79-2.90 AMP Cutter Overload for 208/230v, Pump Overload for 460v
12A7508H2008	1	C/H HEATER PACK #H2008B 3.23-5.23 AMP Pump Overload for 208/230v
12A7508H2004	1	C/H HEATER PACK #H2004B .814-1.21 AMP Cutter Overload for 460v
12A7508H2007	1	C/H HEATER PACK #H2007B 2.15-3.49 AMP
12A7508H2009	1	C/H HEATER PACK #H2009B 4.55-7.40 AMP
12A7508H201	1	C/H HEATER PACK #H2010B 6.75-11.0 AMP
12A7508H2011	1	C/H HEATER PACK #H2011B 9.14-14.0 AMP
12A7508H2013	1	C/H HEATER PACK #H2013B 18.7-30.7 AMP
12A7508H2015	1	C/H HEATER PACK #H2015B 29.0-39.5 AMP
12A7508H2016	1	C/H HEATER PACK #H2016B 39.6-57.4 AMP
12A7508H2017	1	C/H HEATER PACK #H2017B 53.9-74.9 AMP
12A7516E26	1	A/B CONTACTOR, 23-AMP, 3-POLE, 208/240V W/1-NC AUX Condenser Fan Contactor (Air-cooled only) Replaces C/H 12A7516E1
12D2590G08	1	GAGE, 2.5" LQD FILLED, 30"-150 Freezer Pressure Gage
12D2590G09	1	GAGE, 2.5" LQD FILLED, 30"-400 Condenser Pressure Gage

**05TA Series Parts List
(P118 "C" Series)**

Additional Electrical Components

<u>Part Number</u>	<u>Req'd</u>	<u>Description</u>
12A2117G01	2	A/B THERMOSTAT, 15FT <i>Optional (BT)</i>
12A2117G04	2	A/B THERMOSTAT, 15FT WITH ENCLOSURE <i>Optional (BT)</i>
12A2117G09	2	ELECTRONIC BIN THERMOSTAT <i>Optional (BT)</i>
12A2117D01	1	HI/LOW PRESSURE SWITCH
12A2117A05	1	SENTRONIC OIL PRESSURE SAFETY CONTROL
12A2117A0501	1	REPLACEMENT SENSOR #998-0162-00 FOR SENTRONIC OPS
12A2117F05	1	CONDENSER FAN CONTROL SWITCH
12A7519E03	1	CONTROL CIRCUIT TRANSFORMER, 460V-230V, 1KVA <i>For 60HZ Machines</i>
12A7519E02	1	TRANSFORMER, GE #9T51B0170, 1KVA <i>For 50HZ Machines</i>
12A7700P01	1	LINEBACKER PHASE PROTECTOR <i>Optional</i>

Freezer Components

<u>Part Number</u>	<u>Req'd</u>	<u>Description</u>
19T2571F0207	1	FREEZER, 05TA 1" TUBES (.375 Wall) <i>Price includes crating, shipping weight approx. 950lbs</i>
19T2571F0208	1	FREEZER, 05TA 1-1/4" TUBES (.375 Wall) <i>Price includes crating, shipping weight approx. 900lbs</i>
19T2571F0209	1	FREEZER, 05TA 1-1/2" TUBES (.375 Wall) <i>Price includes crating, shipping weight approx. 850lbs</i>
12B2185N11	156	1" WATER DISTRIBUTOR SANOPRENE NO VENT
12B2185N21	102	1-1/4" WATER DISTRIBUTOR SANOPRENE NO VENT
12B2185N31	72	1-1/2" WATER DISTRIBUTOR SANOPRENE NO VENT
12A2600G15	1	FREEZER COVER GASKET 22-1/2" OD x 19" ID
12B2145C03	1	18" LEXAN FREEZER COVER, 3/8" THK. W/VENT HOLE <i>(Requires the Foot Valve & Bulkhead Fitting below)</i>
12A4200B1007	1	VALVES, FOOT (PLASTIC), 1-1/2" MPT
12A2450B13	1	BULKHEAD FITTING, (PVC) 1 1/2"
19T4001S0244	1	SS FREEZER COVER BRACE FOR LEXAN COVER
12A2215J1113	18	CAP SCREW, 1/2"-13NC X 1 1/2"L
12A2250A111	18	WASHER, CUT 1/2" SS (300 SERIES)
12A2250B111	18	WASHER, LOCK 1/2" SS (300 SERIES)
12A2240A1111	18	NUT, HEX 1/2"-13NC S.S.

**05TA Series Parts List
(P118 "C" Series)**

Freezer Components (Con'd)

<u>Part Number</u>	<u>Req'd</u>	<u>Description</u>
12A4009R01		PLUG, RUBBER 7/8" OD X 2" LG FOR 1" TUBES
12A2215H1116	1	CAP SCREW, 3/8"-16NC X 2-1/4" LONG <i>(Use this bolt for 1" tubes)</i>
12A2250A109	2	WASHER, CUT 3/8" x 7/8" O.D. SS <i>(Use this washer for 1" tubes)</i>
12A4009R02		PLUG, RUBBER 1"OD X 2 1/2"LG FOR 1-1/4" TUBES
12A4009R03		PLUG, RUBBER 1 1/4"OD X 2 1/2" FOR 1-1/2" TUBES
12A2215H1119	1	CAP SCREW, 3/8"-16NC X 3" LONG <i>(Use this bolt for 1-1/4" or 1-1/2" tubes)</i>
12A2250A12	2	WASHER, CUT 3/8" x 1" O.D. SS <i>(Use this washer for 1-1/4" or 1-1/2" tubes)</i>
12A2240A1109	1	NUT, HEX 3/8"-16NC S.S.
12A4200L0404	1	RELIEF VALVE #3020 SET @ 275#, 1/2" MPT x 5/8" SAE
12A4200G0301	1	CHARGING VALVE, 3/8 MPT X 1/2 SAE FLARE
12A2451C01	1	CAP, WC, 1/4" FLARE, WITH NEOPRENE SEAL
12A2451R01	1	REDUCER WITH GASKET 1/2" SAE X 1/4" SAE
12A4200G0201	2	VALVES, 1/4" MPT X 1/4" SAE
12A7500E22	1	FLOAT SWITCH, HANSON #HLL (DIFFERENTIAL SET @ 1/2")
12A7500E24	1	SWITCH ASSEMBLY #HLL-SW FOR HANSON
12A2600F01	2	FLANGE GASKET FOR 3/4" & 1" 2-BOLT FLANGE
12A2055B02	1	BRUSH, STAINLESS STEEL #GTC210 FOR 1" TUBES
12A2055B04	1	BRUSH, STAINLESS STEEL #GTC210 FOR 1 1/4" TUBES
12A2055B03	1	BRUSH, STAINLESS STEEL FOR 1-1/2" TUBE

Compressors

Compressors include junction box and overloads. Shipping weight 575lbs.		
<u>Part Number</u>	<u>Req'd</u>	<u>Description</u>
12A2110A1	1	COMPRESSOR, COPELAND DISCUS 3DT3A1500-TFC-200 <i>R-22, 208/230V-3P-60HZ (417lbs Shipping Weight)</i>
12A2110A101	1	COMPRESSOR, COPELAND DISCUS 3DT3A1500-TFD <i>R-22, 460V-3P-60HZ (417lbs Shipping Weight)</i>
12A2110A102	1	COMPRESSOR, COPELAND DISCUS 4DE3-2000-TSK <i>R-22, 200/380/400V-3P-50HZ</i>
12A2110A103	1	COMPRESSOR, COPELAND DISCUS 3DT3-150E-TFC <i>R-404A, 208/230V-3P-60HZ</i>
12A2110A97	1	COMPRESSOR, COPELAND DISCUS 3DT3-150E-TFD <i>R404A, 460V-3P-60HZ</i>
12A2110A99	1	COMPRESSOR, COPELAND DISCUS 4DE3-200E-TSK <i>R404A, 200/380/400V-3P-50HZ</i>

**05TA Series Parts List
(P118 "C" Series)**

Compressor Accessories

<u>Part Number</u>	<u>Req'd</u>	<u>Description</u>
12A7509E12	1	CRANKCASE HEATER #518-0028-01 100 WATT INSERTION
12A2110P0904	1	UNLOADER PKG FOR 3DA, 3DE, 3DH COPELAND COMP
12A2105C24	1	UNLOADER COIL #023-0039-2, 208/230V COPELAND
12A2105C20	1	UNLOADER COIL #023-0041-01, 120V COPELAND
12A7523E14	2	KLIXON OVERLOAD 9980524-00-COPELAND DISCUS
12A2117A05	1	SETRONIC OIL PRESSURE SAFETY CONTROL
12A2110P0917	1	ELECTRONIC MOTOR PROTECTION MODULE-4D/6D DISCUS
12A2110P0918	1	ELECTRONIC MOTOR PROTECTION MODULE FOR 3D DISCUS

Cutter Drive Parts

<u>Part Number</u>	<u>Req'd</u>	<u>Description</u>
12A2900M0508	1	CUTTER MOTOR, 1/2HP 208/230/460V-3P-50/60HZ
12A4030R12	1	GEAR REDUCER, GROVE 10:1 WASHDOWN W/VENT PLUG
12A2900M0601	1	CUTTER MOTOR 3/4HP, 1200 RPM, 208/230/460V-3P-60HZ <i>Used for Crushed Ice</i>
12A4030R08	1	GEAR REDUCER, GROVE 5:1 RATIO <i>Used for Crushed Ice</i>
19T2615D01	1	CUTTER DRIVE GEAR TI-59 W/O HUB
19T2615R02	1	P118F FINISHED RING GEAR, ALUMINUM-BRONZE
12A3040S02	1	CUTTER BEARING ROLL PIN 3/16" X 1/2"
12A2160H0101	1	CUTTER DRIVE GEAR HUB 5/8" BORE
12A2215F1112	3	CAP SCREW, 1/4"-20NC X 1 1/4"Long SS <i>Gear Hub Mounting Screws</i>
12A2250B107	3	WASHER, LOCK 1/4" SS (300 SERIES)

Cutter Internals

<u>Part Number</u>	<u>Req'd</u>	<u>Description</u>
19T2160C0202	1	(P18/118) SS CAST CUTTER ASSEMBLY FOR CYL ICE <i>Specify tube size</i>
126413B	1	CUTTER ASSEMBLY - P118F SQ BOTTOM TANK CRUSHED <i>Used for Crushed Ice Operation</i>
12A4000M01	1	(P118) CRUSHED ICE WATER TANK SCREEN
12B2020R01	1	UHMW CUTTER BEARING FOR M1500 thru P418F
12A3040S02	1	CUTTER BEARING ROLL PIN 3/16" X 1/2"
19T2025B0101	1	BEARING BRACKET FOR 18" CUTTER
19T2163D0202	1	MID-SIZE CUTTER DISC ASSEMBLY
12A3040S01	1	CUTTER DISC ROLL PIN, 1/4" X 1 1/2"
19T4073R07	1	CUTTER DISC ROLL PIN TOOL

**05TA Series Parts List
(P118 "C" Series)**

Water Tank & Circulating Water

Original 05TA units were built with stainless steel water tanks. Moulded plastic water tanks were introduced in early 1999.

<u>Part Number</u>	<u>Req'd</u>	<u>Description</u>
12A2600G05	1	WATER TANK GASKET 22" OD x 19" ID x 3/16" <i>Upper Gasket (Freezer to Stainless Tank)</i>
12A2600G17	1	WATER TANK BAND GASKET 18"ID x 18-3/8" OD x 2" TALL <i>Lower Gasket (Stainless Tank to Plastic Tank)</i>
12A4200H0402	1	FLOAT VALVE, 1/2" MPT ROBERTS FLOAT #R700L-1/2
12A4200HP01	1	STEM FOR ROBERTS FLOAT, 10" LG x 1/4-20 THREAD BRASS
12A4200HP02	1	FLOAT FOR ROBERTS, 4" CYL x 6" LG W/1/4-20 THREAD
12A2451U14	1	UNION, WC, 1/2" MPT X 5/8" SAE
12A4020G01	1	PUMP, GOULD NPE 3ST, 1.5 HP, 208/230/460-3-50/60 3-5/8" IMP
12A4080S12	1	SEAL, PUMP FOR GOULD NPE 3ST 1-1/2 HP
12A4181T09	7	TUBING, PLASTIC, CLEAR, 2" ID x 3/16" THK <i>Circulating Water (Priced per ft)</i>
12A4181T05	7	TUBING, TYGON B-44-3, 1-1/2" OD x 1" ID <i>Overflow (Priced per ft)</i>
12A4181T08	3	TUBING, TYGON B-44-3, 3/8" OD x 1/4" ID <i>Blowdown (Priced per ft)</i>
12A4181CL03	3	PUMP SUCTION TUBING, 2" ID x 1/4" WALL x 8-3/4" LONG
12A2450E12	1	ELL, PVC, 90 DEG. 2" MPT X 2"
12A2450N01	3	NIPPLE, PVC, 1 1/2" X 2" LONG
12A2450E15	4	ELL, PVC, 45 DEG. 1 1/2" FPT
12A4200B1003	1	VALVES, CHECK, (PVC), SWING 1-1/2"
12A2450A06	1	ADAPTER, MALE, PVC, 2" INSERT x 1-1/2" MIPT
12A2450A07	1	ADAPTER, MALE, PVC, 2" MPT x 2" INSERT
12A1501S28	1	PVC WATER TANK DRAIN ASSEMBLY
12A2100C0201	2	CLAMPS, SS HOSE, 13/16" x 1 3/4"
12A2100C0202	4	CLAMPS, SS HOSE, 1-13/16" x 2-3/4"
12A4200G0101	1	PET COCK VALVE, 1/8" MPT x 1/4" HOSE
12A4500P118	1	P118F/P18F PLASTIC WATER TANK, MOLDED LLDPE

Water-Cooled Condenser

<u>Part Number</u>	<u>Req'd</u>	<u>Description</u>
12A2115S0103	1	STANDARD CONDENSER #HSE-15
12A2600S06	1	CONDENSER INLET SIDE GASKET FOR STANDARD HSE-15
12A2600S07	1	CONDENSER RETURN SIDE GASKET FOR STANDARD HSE-15
12A4200L0408	1	RELIEF VALVE #3020 SET @ 400#, 1/2" MPT x 5/8" SAE
12A4200G0201	1	VALVES, 1/4" MPT X 1/4" SAE
12A4200E1001	1	WATER REGULATING VALVE, 1-1/4" FPT
12A2055B01	1	CONDENSER CLEANING TOOL, ADJUSTABLE 3/8" x 1/2" ID

**05TA Series Parts List
(P118 "C" Series)**

Air-Cooled Condenser

<u>Part Number</u>	<u>Req'd</u>	<u>Description</u>
12A2115KS311	1	CONDENSER, HDD-311, 50/50 SPLIT COIL & CONTROLS 60hz Units
12A2115KS361	1	CONDENSER, HDD-361, 50/50 SPLIT COIL & CONTROLS 50hz Units
12A2900M0505	1	CONDENSER FAN MOTOR, 1/2HP 208/230/460-3-50/60
12A2115P0401	1	CONDENSER, FAN BLADE 213455000, 24"
12A7516E26	1	A/B CONTACTOR, 23-AMP, 3-POLE, 208/240V W/1-NC AUX Condenser Fan Contactor (Air-cooled only) Replaces Furnas 12A7516E06 and C/H 12A7516E1
12A2117F05	1	CONDENSER FAN CONTROL SWITCH
12A4200B0701	1	CHECK VALVE, 7/8" O.D.
12A4200A0904	1	VALVES, SOLENOID, SPORLAN 1-1/8" ODC 208/230V-50/60HZ Discharge Line (X-Valve)

Receiver

<u>Part Number</u>	<u>Req'd</u>	<u>Description</u>
12A2625G08	1	GAGE GLASS 1/2" X 18 7/8" LONG For Brass Gage Cock Valves with 21-5/8" Centers
12A2625G10	1	GAGE GLASS, 1/2" X 20" LONG For Steel Gage Cock Valves
12A2635G07	1	GAGE GLASS GUARD SET, 17 5/8"
12A4199V26	2	GAGE GLASS PACKING O-RING FOR 1/2" DIAMETER
12A4200J0405W	1	UPPER GAGE COCK VALVE, WESTERMEYER PLATED Replaced Brass Valve 12A4200J0403 - May 1999
12A4200J0406W	1	LOWER GAGE COCK VALVE, WESTERMEYER PLATED Replaced Brass Valve 12A4200J0404 - May 1999
12A3050C0301	2	PIPE NIPPLE, 1/2" X 1-1/2" LONG
12A4200G0402	1	ANGLE VALVE, 1/2" MPT x 1/2" FPT Drain Valve
12A4200G0201	2	VALVES, 1/4" MPT X 1/4" SAE Purge/Pressure Test Valve
12A4200L0408	1	RELIEF VALVE #3020 SET @ 400#, 1/2" MPT x 5/8" SAE
12A4200R0701	1	ROTA-LOCK VALVE HORIZ. 7/8" ID SWT x 1-1/4-12 THREAD Liquid Return Valve
12A4200G0406	1	VALVES, ANGLE, HANSEN 1/2" SOCKET WELD Liquid Line (King) Valve
12A2600T01	1	ROTA-LOCK PRIMORE TEFLON SEAL FOR 1-1/4-12 THREAD

**05TA Series Parts List
(P118 "C" Series)**

Discharge Line & Oil Return

<u>Part Number</u>	<u>Req'd</u>	<u>Description</u>
12A3025S14	1	OIL SEPARATOR, TEMPRITE #924, 1 1/8 ODC CONNECTIONS Accessible Coalescent Type
12A2451R02	1	FLARE ADAPTOR, 3/8" (F) SAE x 1/4" (M) SAE
12A4200G0201	1	VALVES, 1/4" MPT X 1/4" SAE Oil Return Stop Valve
12A4200A0904	1	VALVES, SOLENOID, SPORLAN 1-1/8" ODC 208/230V-50/60HZ (X-Valve) Air-Cooled Only (Extended Ends)
12A4199V46	1	REPAIR KIT #KS-E34 FOR SPORLAN ME34S
12A2105C16	1	COIL, #MKC-2 FOR SPORLAN 208/240V-50/60HZ
12A2975M04	1	MUFFLER ACR #S-6411, 1-1/8" ODC
12A4200G0901	1	VALVES, ANGLE, HENRY #6478N Discharge Line Stop Valve (Air-Cooled Only)
12D2590G09	1	GAGE, 2.5" LQD FILLED, 30"-400 Discharge Pressure Gage

Suction/Liquid Line

<u>Part Number</u>	<u>Req'd</u>	<u>Description</u>
12A2000A07	1	SUCTION ACCUMULATOR/HEAT-X, 1-5/8" x 3/4"
12A2710H21	1	HEAT-EXCHANGER HE8058-20 DOUCETTE 1-5/8" x 7/8"
12A4200A0606	1	VALVES, SOLENOID, HANSEN #HS8 W/STRAINER Liquid Line Solenoid (A-Valve)
12A4199V51	1	REPAIR KIT #70-1001 FOR HANSEN HS8
126229	1	COIL, HANSEN #70-1063,208/240V-50/60HZ W/JUNCTION BOX
12A4200C0406	1	HAND EXPANSION VALVE, 1/2" ANGLE HANSEN
12A2140C01	1	FILTER DRIER CORE #RC-4864 FOR R-22
12A2140C02	1	FILTER DRIER CORE #RCW-48 FOR R-404A
12A4200G0201	1	VALVES, 1/4" MPT X 1/4" SAE Strainer Access Valve
12A4200G0406	1	VALVES, ANGLE, HANSEN 1/2" SOCKET WELD Liquid Line (King) Valve
12D2590G08	1	GAGE, 2.5" LQD FILLED, 30"-150 Suction Pressure Gage

**05TA Series Parts List
(P118 "C" Series)**

Thawing Gas Line

<u>Part Number</u>	<u>Req'd</u>	<u>Description</u>
12A4200A1001	1	VALVES, SOLENOID, HANSEN #HS7, 1-1/4" PORT SW <i>Thawing Gas Solenoid ("D"-Valve)</i>
12A4199V52	1	REPAIR KIT #70-1018 FOR HANSEN HS7
126229	1	COIL, HANSEN #70-1063,208/240V-50/60HZ W/JUNCTION BOX

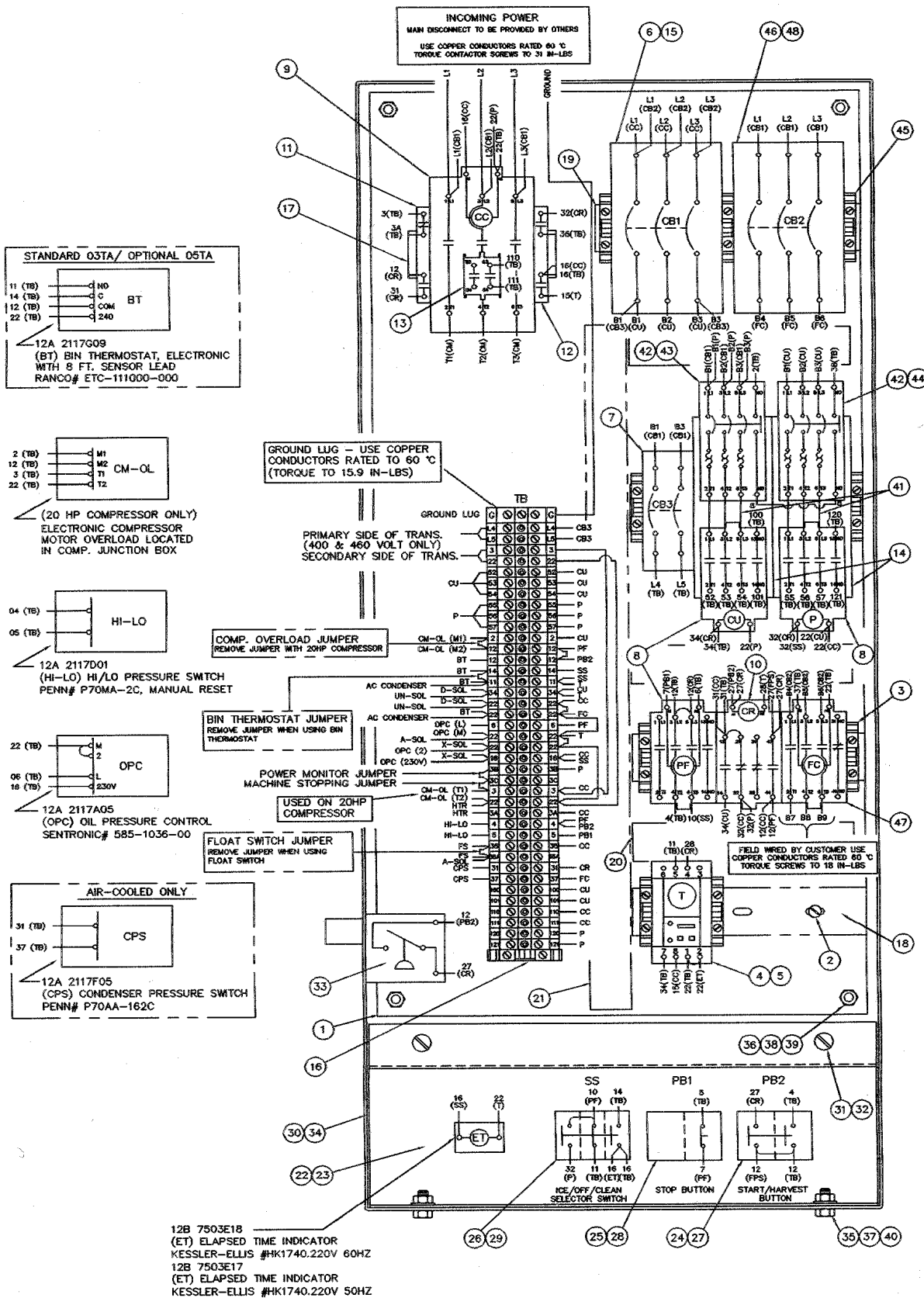
Superhose & Fittings

<u>Part Number</u>	<u>Req'd</u>	<u>Description</u>
12A2742S01	2	SUPERHOSE ASSY, 12" LONG, 1/4" <i>Hi-Low Pressure Switch to Compressor</i>
12A2742S02	1	SUPERHOSE ASSY, 14" LONG, 1/4" <i>High Pressure Gage to Compressor</i>
12A2742S03	1	SUPERHOSE ASSY, 20" LONG, 1/4" <i>Low Pressure Gage to Compressor</i>
12A2742S05	1	SUPERHOSE ASSY, 42" LONG, 1/4" <i>Compressor to Oil Separator</i>
12A2742S06	1	SUPERHOSE ASSY, 54" LONG, 1/4" <i>Freezer Pressure Switch to Freezer</i>
12A2451T01		TEE, WC, 1/4" SAE x 1/4" MPT x 1/4" SAE
12A2451T02		TEE, WC, 1/4" SAE x 1/4" SAE x 1/4" MPT
12A2451T03		TEE SWIVEL 1/4" SAE x 1/4" ACCESS x 1/4" FEMALE SWIVEL
12A2451T04		TEE, BRASS 1/4" MPT x 1/4" SAE x 1/4" ACCESS
12A2451T06		TEE, SWIVEL, 1/4" SWIVEL x 1/4" SAE x 1/4" SAE
12A2451T07		TEE, 1/8" MPT x 1/4" SAE x 1/4" SAE
12A2451T08		TEE, BRASS, 1/4" (M) SAE x 1/4" (M) SAE x 1/4" (F) SAE
12A2451T09		TEE, 1/4" SAE FLARE
12A2451T1		TEE, STREET, BRASS 1/4" MPT X 1/4" FPT x 1/4" FPT
12A2451T11		TEE, 1/8" MPT X 1/4" SAE x 1/4" ACCESS
12A2451U01		UNION, U3-4B, 1/4" SAE x 1/4" FPT
12A2451U02		UNION, WC, BRASS 1/4" SAE x 1/4" ODC
12A2451U05		UNION, WC, 1/4" SAE x 1/4" MPT
12A2451U06		UNION, WC, 1/4" SAE x 1/8" MPT

Goldenrod Water Treatment

<u>Part Number</u>	<u>Req'd</u>	<u>Description</u>
12A2195W0901	1	GOLDENROD WATER TREATMENT, 9" - 25 GPM - NSF
12A2195I01	2	INSULATOR, DELRON FOR 5", 9", OR 12" GOLDENROD
12A2195W0504	1	DELRON THREADED PLUG FOR GOLDENROD

05TA Control Panel Layout (Allen-Bradley)



05TA Control Panel Layout (Allen-Bradley)

BILL OF MATERIALS

KAN-BAN #	ITEM	PART NO.	DESCRIPTION	QTY.
19T2120M01 KAN-BAN ASSEMBLY <small>(COMMON TO ALL MODELS)</small>	1	12A2135M01	ENCLOSURE INSERT, 03TA, 05TA, 10TA	1
	2	12A2226E1106	SCREW, 10-24NC X 1/2"	25
	3	12A7501E49	TERMINAL BLOCK END STOP	10
	4	12A7503E22	TIMER, DELAY ON MAKE, 220V	1
	5	12A7503E39	TIMER BASE, 8 PIN, GUARDED TERMINAL	1
	6	12A7515E08	CIRCUIT BREAKER, 15A, 3 POLE	1
	7	12A7515E21	CIRCUIT BREAKER, 3A, 2 POLE	1
	8	12A7516E23	CONTACTOR, 9A, 3 POLE, W/1NO AUX, 208/240V COIL	3
	9	12A7516E30	CONTACTOR, 72A, 3 POLE, 208/240V COIL	1
	10	12A7517E27	RELAY, 10A, 2NO/2NC, 208/240V	1
	11	12A7518E30	AUX. CONTACT, 3A, 1NO/1NC, SIDE MOUNT	1
	12	12A7518E31	AUX. CONTACT, 3A, 2NO, SIDE MOUNT	1
	13	12A7518E32	AUX. CONTACT, 5A, 2NO, TOP MOUNT	1
	14	12A7534R02	DIN RAIL ADAPTER PLATE (FOR STARTER)	2
	15	12A7534R03	DIN RAIL ADAPTER (FOR CB #GD3015)	1
	16	19T7501E03	TERMINAL BLOCK ASSEMBLY, MID-SIZE	1
	17	19T7534R0101	DIN RAIL, 4" LONG	1
	18	19T7534R0102	DIN RAIL, 6 5/16" LONG	3
	19	19T7534R0106	DIN RAIL, 7 3/16" LONG	1
	20	19T7535D0501	WIRING DUCT/COVER 1" X 3" X 8" LONG	3
	21	19T7535D0506	WIRING DUCT/COVER 1" X 3" X 20" LONG	1

ASSEMBLY #	ITEM	PART NO.	DESCRIPTION	QTY.
19T2138M01 SWITCH PLATE ASSEMBLY <small>(COMMON TO ALL MODELS)</small>	22	12A2138M01	ENCLOSURE SWITCH PLATE, 03TA, 05TA, 10TA	1
	23	12A4171T79	SWITCH PLATE STICKER, 03TA, 05TA, 10TA	1
	24	12A7500E58	PUSH BUTTON, MOMENTARY, GREEN	1
	25	12A7500E57	PUSH BUTTON, MOMENTARY, RED	1
	26	12A7500E61	SELECTOR SWITCH, 3 POSITION	1
	27	12A7500E73	CONTACT BLOCK/MOUNTING LATCH, 2NO	1
	28	12A7500E76	CONTACT BLOCK/MOUNTING LATCH, 1NC	1
	29	12A7500E77	CONTACT BLOCK/MOUNTING LATCH, 2NO/1NC	1

ASSEMBLY #	ITEM	PART NO.	DESCRIPTION	QTY.
COVER ASSEMBLY <small>(COMMON TO ALL MODELS)</small>	30	12A2130M01	ENCLOSURE COVER, 03TA, 05TA, 10TA	1
	31	12A2226F1114	SCREW, 1/4-20NC X 1/2". FLAT HEAD, SLOTTED	2
	32	12A4065R06	RETAINER, NYLON PUSH-ON	2

ASSEMBLY #	ITEM	PART NO.	DESCRIPTION	QTY.
ASSEMBLY HARDWARE <small>(COMMON TO ALL MODELS)</small>	33	12A2117E04	FREEZER PRESSURE SWITCH	1
	34	12A2125M01	ENCLOSURE, 03TA, 05TA, 10TA	1
	35	12A2215F1106	CAP SCREW, 1/4-20NC X 1/2"	2
	36	12A2215H1112	CAP SCREW, 3/8-16NC X 1 1/4"	4
	37	12A2240A1107	HEX NUT 1/4-20NC S.S.	2
	38	12A2240A1109	HEX NUT 3/8-16NC S.S.	4
	39	12A2240B1109	LOCKNUT 3/8-16NC S.S. W/NYLON INSERT	4
	40	12A2250B107	LOCKWASHER 1/4" S.S.	2
	41	12A7505E21	CONNECTOR KIT, FOR 140-MN CONTACTOR 100-C	2
	42	12A7518E33	AUX. CONTACT, 6A, 1NO, SIDE MOUNT	2

PANEL #	ITEM	PART NO.	DESCRIPTION	QTY.
19T2120M0101 <small>200/200/230V, 50/60 HZ NR-00000</small>	43	12A7530E54	CUTTER MANUAL MOTOR STARTER, 1.6-2.5A	1
	44	12A7530E56	PUMP MANUAL MOTOR STARTER, 4.0-6.3A	1
19T2120M0102 <small>200/200/230V, 50/60 HZ NR-00000</small>	43	12A7530E52	CUTTER MANUAL MOTOR STARTER, 0.63-1.0A	1
	44	12A7530E54	PUMP MANUAL MOTOR STARTER, 1.6-2.5A	1
19T2120M0103 <small>200/200/230V, 50/60 HZ NR-00000</small>	43	12A7530E53	CUTTER MANUAL MOTOR STARTER, 1.0-1.6A	1
	44	12A7530E55	PUMP MANUAL MOTOR STARTER, 2.5-4.0A	1
19T2120M0104 <small>200/200/230V, 50/60 HZ NR-00000</small>	43	12A7530E54	CUTTER MANUAL MOTOR STARTER, 1.6-2.5A	1
	44	12A7530E56	PUMP MANUAL MOTOR STARTER, 4.0-6.3A	1
	45	12A7501E49	TERMINAL BLOCK END STOP	1
	46	12A7515E08	CIRCUIT BREAKER, 15A, 3 POLE	1
	47	12A7516E26	CONTACTOR, 23A, 3 POLE, W/1NC AUX, 208/240V COIL	1
19T2120M0105 <small>200/200/230V, 50/60 HZ NR-00000</small>	48	12A7534R03	DIN RAIL ADAPTER (FOR CB #GD3015)	1
	43	12A7530E52	CUTTER MANUAL MOTOR STARTER, 0.63-1.0A	1
	44	12A7530E54	PUMP MANUAL MOTOR STARTER, 1.6-2.5A	1
	45	12A7501E49	TERMINAL BLOCK END STOP	1
	46	12A7515E08	CIRCUIT BREAKER, 15A, 3 POLE	1
19T2120M0106 <small>200/200/230V, 50/60 HZ NR-00000</small>	47	12A7516E26	CONTACTOR, 23A, 3 POLE, W/1NC AUX, 208/240V COIL	1
	48	12A7534R03	DIN RAIL ADAPTER (FOR CB #GD3015)	1
	43	12A7530E53	CUTTER MANUAL MOTOR STARTER, 1.0-1.6A	1
	44	12A7530E55	PUMP MANUAL MOTOR STARTER, 2.5-4.0A	1
	45	12A7501E49	TERMINAL BLOCK END STOP	1
19T2120M0106 <small>200/200/230V, 50/60 HZ NR-00000</small>	46	12A7515E08	CIRCUIT BREAKER, 15A, 3 POLE	1
	47	12A7516E26	CONTACTOR, 23A, 3 POLE, W/1NC AUX, 208/240V COIL	1
	48	12A7534R03	DIN RAIL ADAPTER (FOR CB #GD3015)	1

NOTE:
PART NUMBERS NOT IN THE BILL OF MATERIALS
ARE FOR REFERENCE ONLY. THEY ARE NOT TO
BE INCLUDED IN PANEL PRODUCT STRUCTURE.

05TA Air-Cooled Discharge Line Detail

WELD SUPPORT BRACKET IN PLACE
AFTER DISCHARGE LINE IS ASSEMBLED

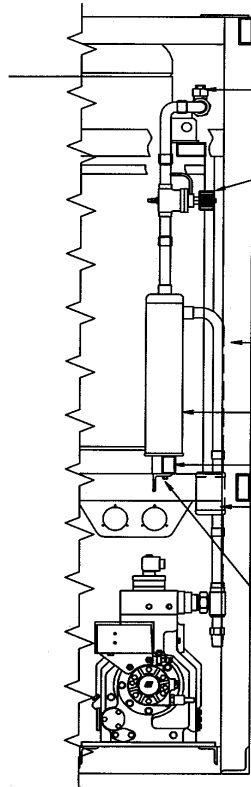
12A-2416W0006
WC LONG RADIUS
90° ELL 1-1/8"
ODC X ODF

12A-2215F1108
SS CAP SCREW 1/4" X 3/4" LG
12A-2240A1107
1/4" SS HEX NUT
12A-2250B107
1/4" SS LOCKWASHER
12A-7513E02
SIZE #1 CONDUIT CLAMP

12A-2396A0601
ROTALOCK ADAPTER
1-3/8"IDS X 1-3/4"-12 THREADS

12A-2402W0117
WC FITTING REDUCER 1-3/8"ODF X 1-1/8"ODC

TOP VIEW



FRONT VIEW

12A-4200G0903
1 1/8" VALVE, BALL TYPE
SUPERIOR #S91WAS-11ST

12A-4200A0904
SPOPLAN #ME34S290
1-1/8"OD SOLENOID
EXTENDED LENGTH

12A-4179F1208
TUBE BEND 1-1/8"OD
6" X 20" X 90°

12A-3025S09
OIL SEPARATOR
ACR #S-5188
1-1/8"OD CONNECTIONS

12A-2451R02
FLARE ADAPTOR
3/8" F X 1/4" M

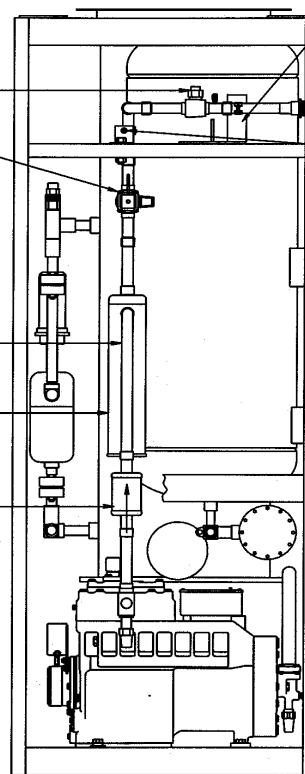
12A-2975M08
MUFFLER ACR #S-6311
1-1/8" OD CONNECTIONS

12A-2215H111
CAP SCREW 3/8" X 1"

12A-2240A1109
3/8" SS HEX NUT

12A-2250A12
3/8" SS CUT WASHER (2 REQD)

12A-2250B109
3/8" SS LOCK WASHER



RIGHT SIDE VIEW

19T4142C2778
SUPPORT BRACKET

12A-2222L3117
5/8" SS HEX HD. MACH. BOLT
12A-2240A2113
5/8" SS HEX NUT

12A-2250A113
5/8" SS CUT WASHER (2 REQ'D)

12A-2250B113
5/8" SS LOCK WASHER

12A-7513E03
#2 CONDUIT HANGER

12A-2240A1107
1/4" SS HEX NUT

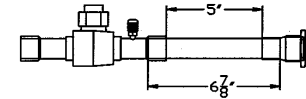
12A-2250A107
1/4" SS CUT WASHER

12A-2250B107
1/4" SS LOCK WASHER

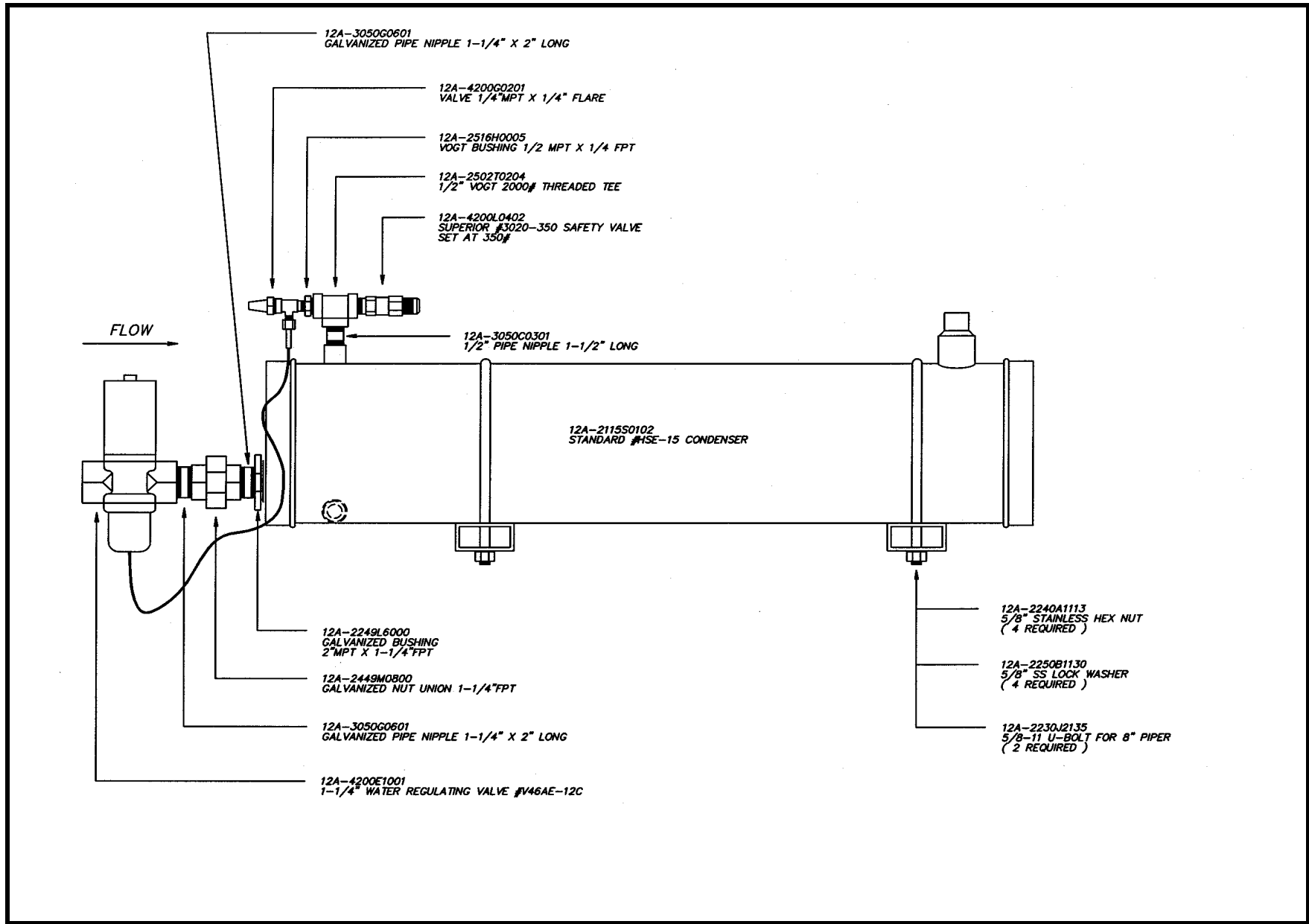
12A-2215F1108
1/4" SS HEX HEAD CAP SCREW

19T-4142S3006
SS ANGLE BRACE, 2" X 2" X 1/8", 2" LG

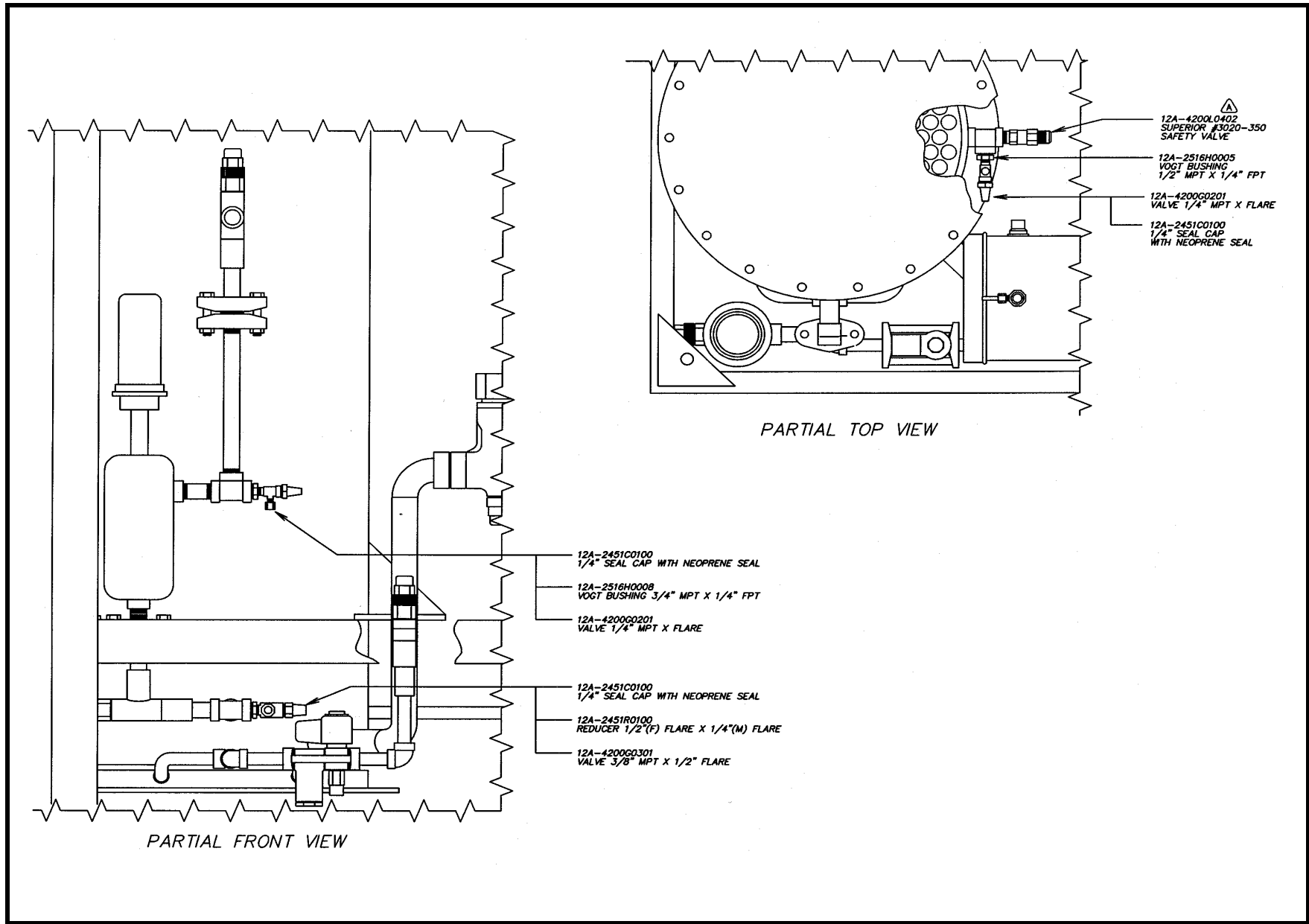
12A-4130S099
SPACER-15/16" OD X 9/16" ID X 5/8" LG



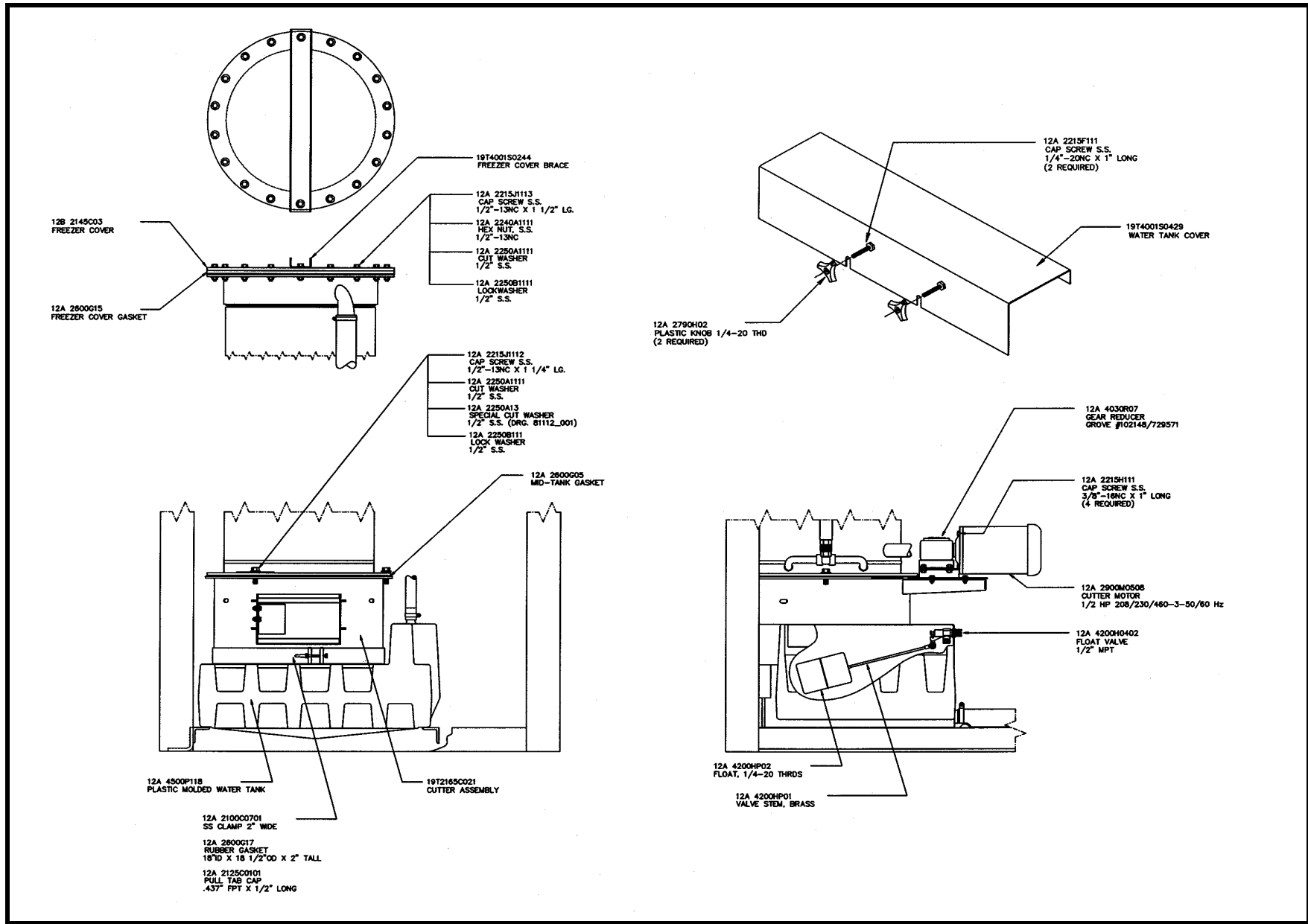
05TA Condenser Assembly Detail



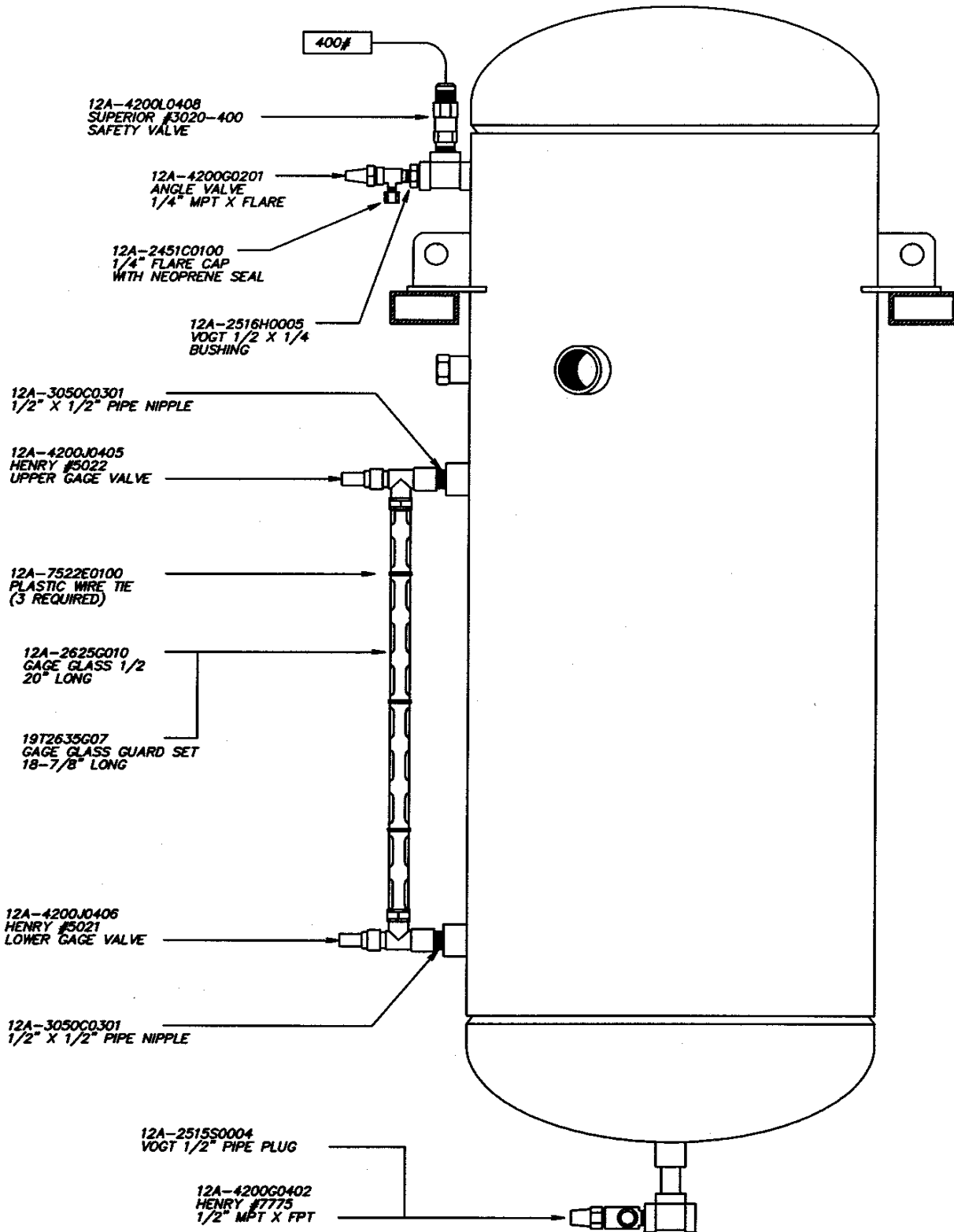
05TA Freezer Parts Detail



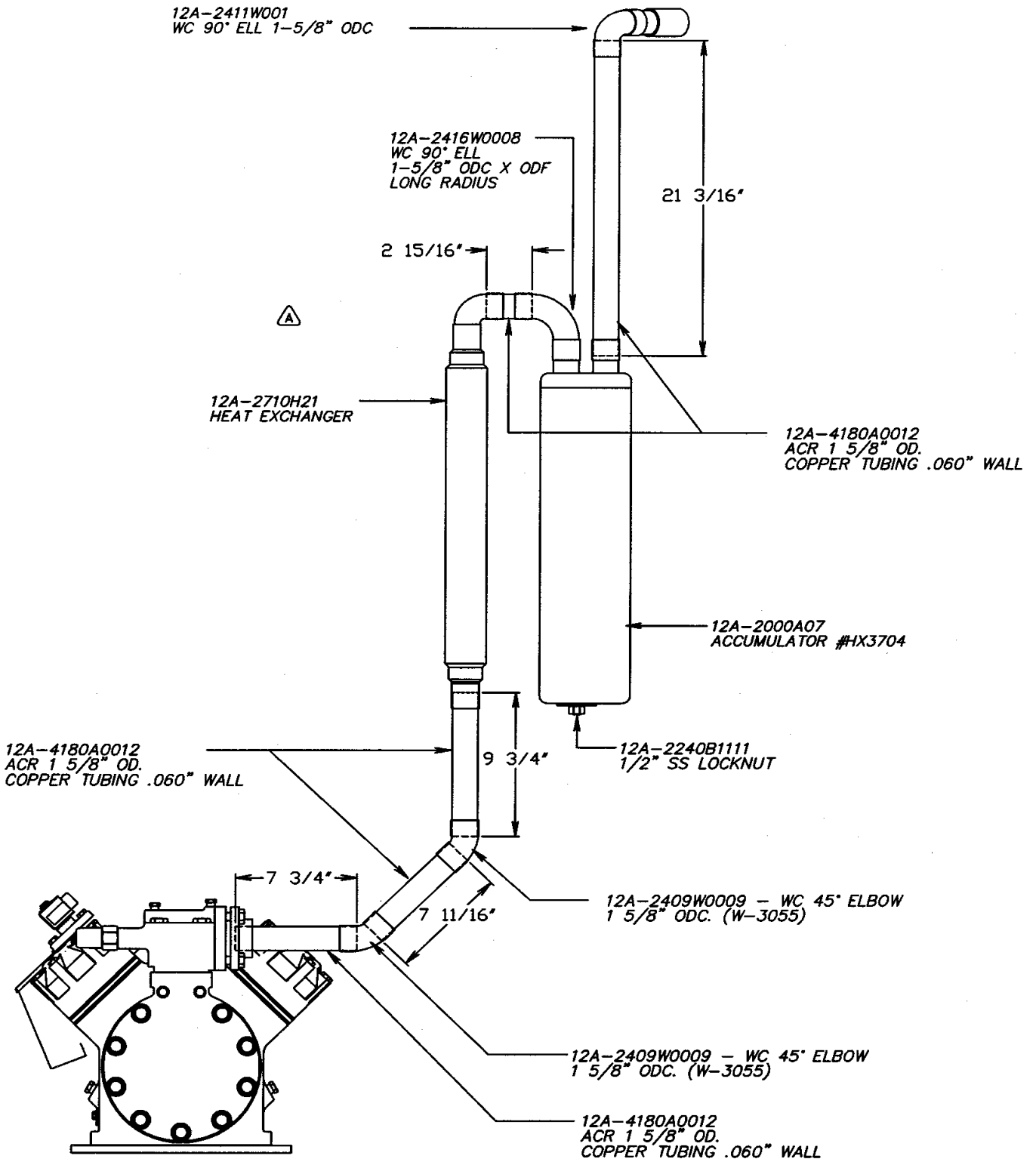
05TA Make-Up Water Float/Tank Detail



05TA Receiver Parts Detail

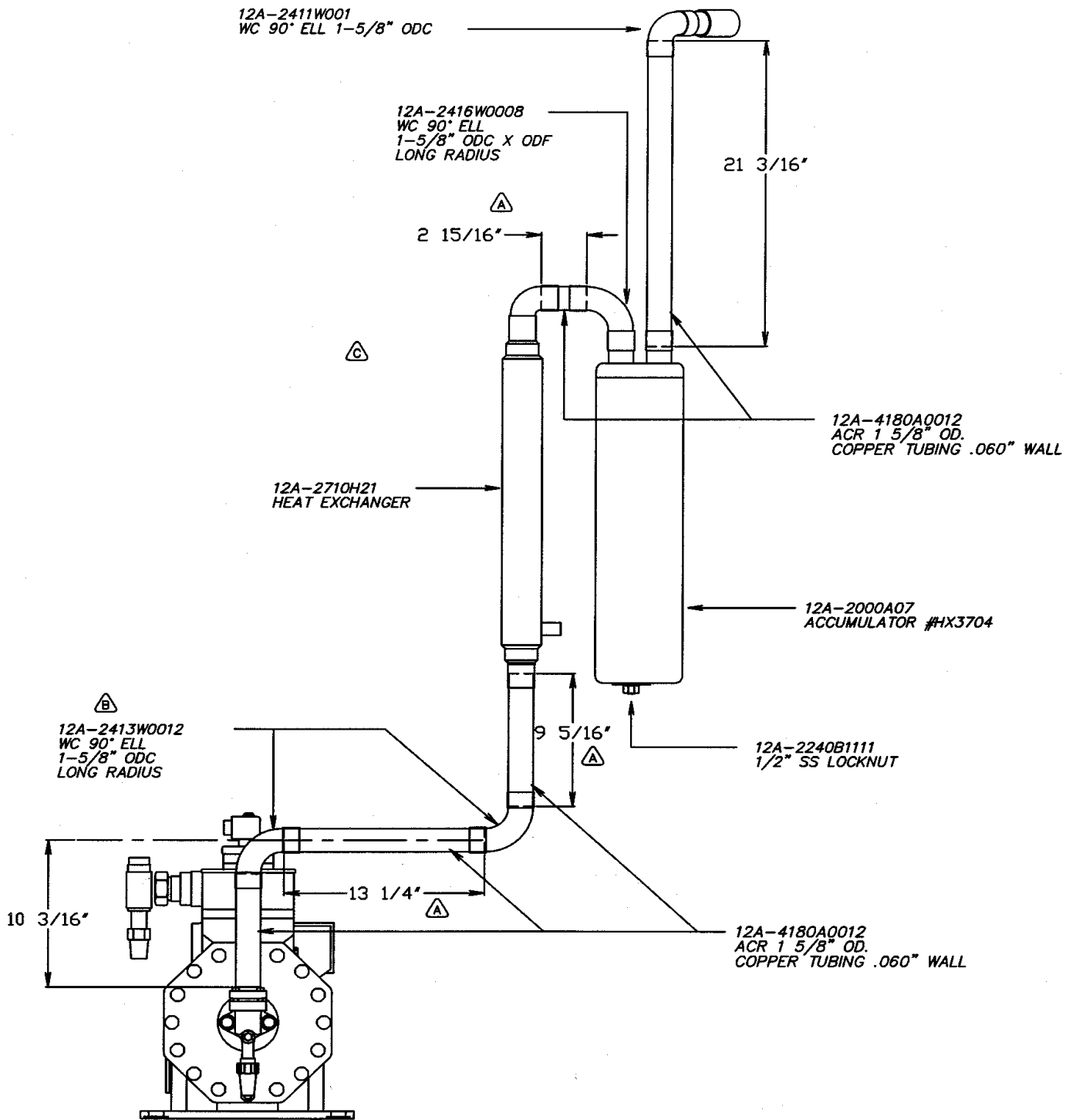


05TA Suction Line Detail 50hz



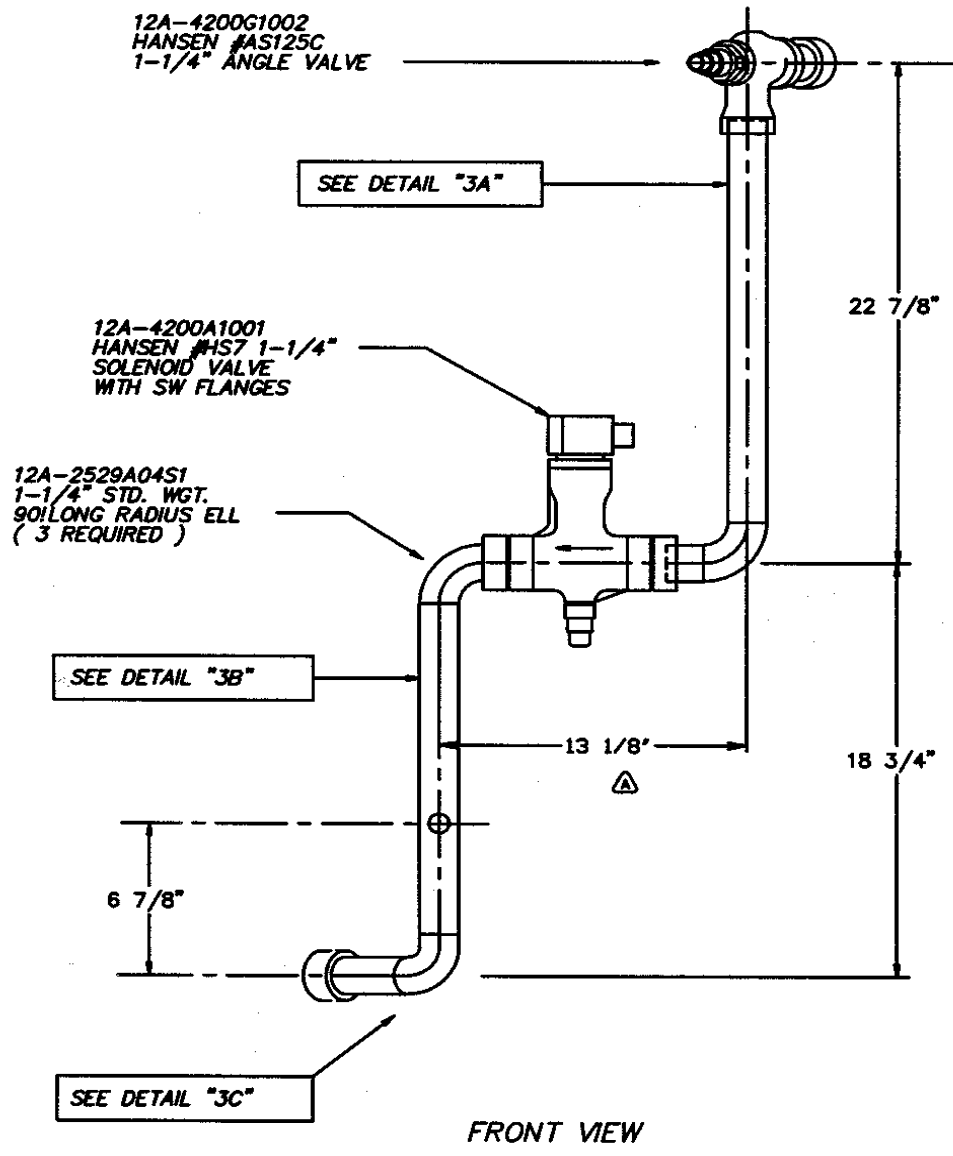
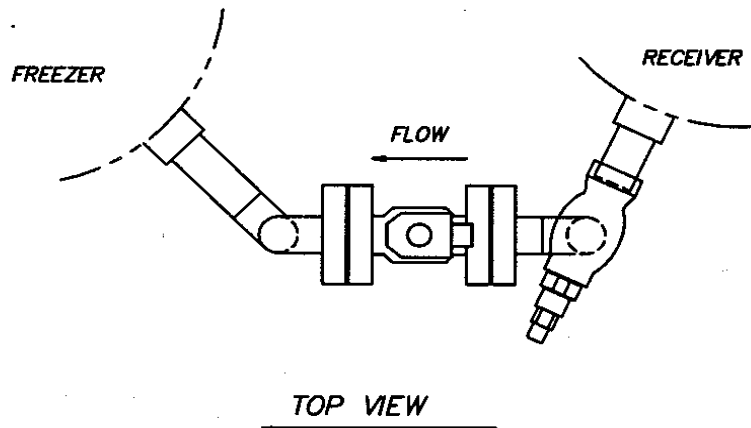
REAR VIEW OF MACHINE

05TA Suction Line Detail

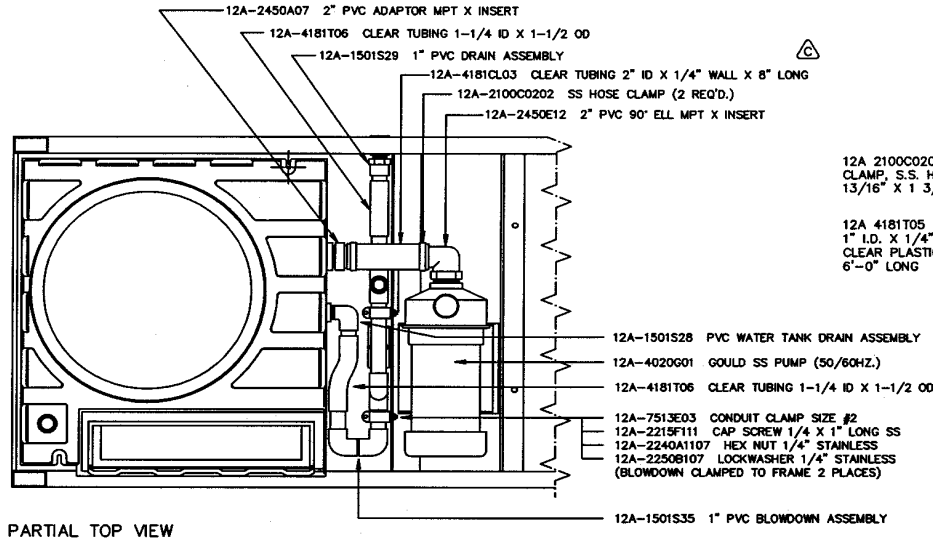


REAR VIEW OF MACHINE

05TA Thawing Gas Line Detail



05TA Water Pump/Drain Detail



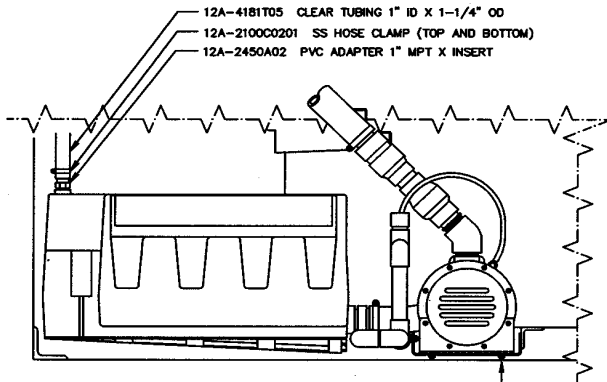
PARTIAL TOP VIEW

12A 2100C0201 CLAMP, S.S. HOSE 13/16" X 1 3/4" MAX.

12A 4181T05 1" I.D. X 1/4" WALL CLEAR PLASTIC TUBING 6'-0" LONG

12A 2100C0202 CLAMP, S.S. HOSE 1 13/16" X 2 3/4" MAX.

12A 4181T09 2" I.D. X 3/16" WALL CLEAR PLASTIC TUBING 6'-0" LONG



PARTIAL FRONT VIEW

12A-2215H1108 SS CAP SCREW 3/8" X 3/4" LONG
 12A-2250B109 SS LOCKWASHER 3/8"

12A-1501S38 WATER PUMP DISCHARGE CHECK VALVE ASSEMBLY DRG. 81474

12A-4181T08 CLEAR TUBING 1/4" ID X 3/8" OD

12A-2450E15 PVC 45° ELL 1-1/2" FPT

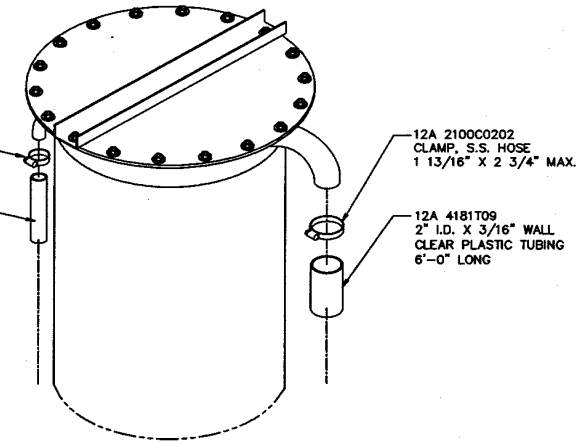
12A-2450N01 PVC PIPE NIPPLE 1-1/2" X 2" LONG

12A-4200G0101 BRASS VALVE 1/8" MPT X 1/4" HOSE

12A-2451B01 BRASS BUSHING 1/4" MPT X 1/8" FPT

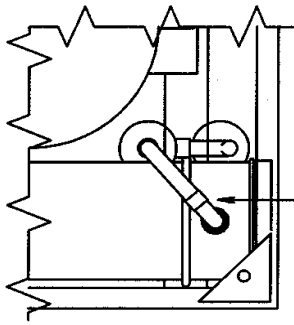
12A-4181T09 CLEAR TUBING 2" ID X 3/16" WALL

12A-2100C0202 SS HOSE CLAMP



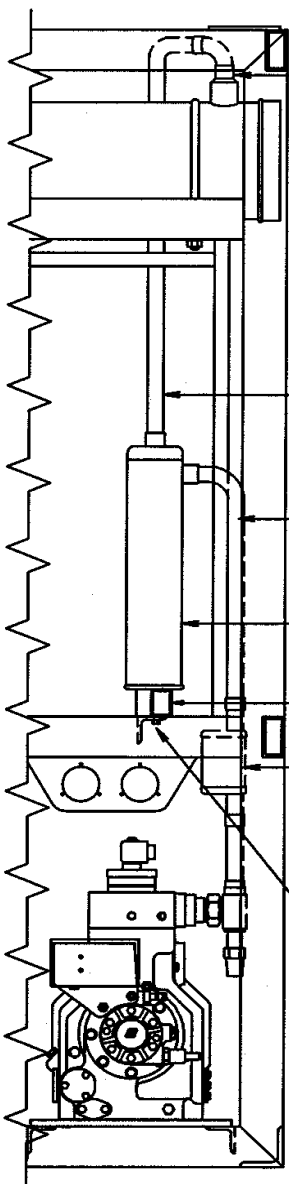
PARTIAL REAR VIEW

05TA Water-Cooled Discharge Line Detail



TOP VIEW

12A-2416W0006
WC LONG RADIUS
90° ELL 1-1/8"
ODC X ODF



FRONT VIEW

12A-2402W0119
WC FITTING REDUCER
1-5/8 ODF X 1-1/8 ODC

12A-7513E03
#2 CONDUIT HANGER

12A-2240A1107
1/4" SS HEX NUT

12A-2250A107
1/4" SS CUT WASHER

12A-2250B107
1/4" SS LOCK WASHER

12A-2215F1108
1/4" SS HEX HEAD CAP SCREW

19T-4142S3006
SS ANGLE BRACE, 2" X 2" X 1/8", 2" LG

12A-4179G03
TUBE BEND 1-1/8" OD
32" X 8" X 90°

12A-4179F1208
TUBE BEND 1-1/8" OD
6" X 20" X 90°

12A-3025S09
OIL SEPARATOR
ACR #S-5188
1-1/8" OD CONNECTIONS

12A-2451R02
FLARE ADAPTOR
3/8" F X 1/4" M

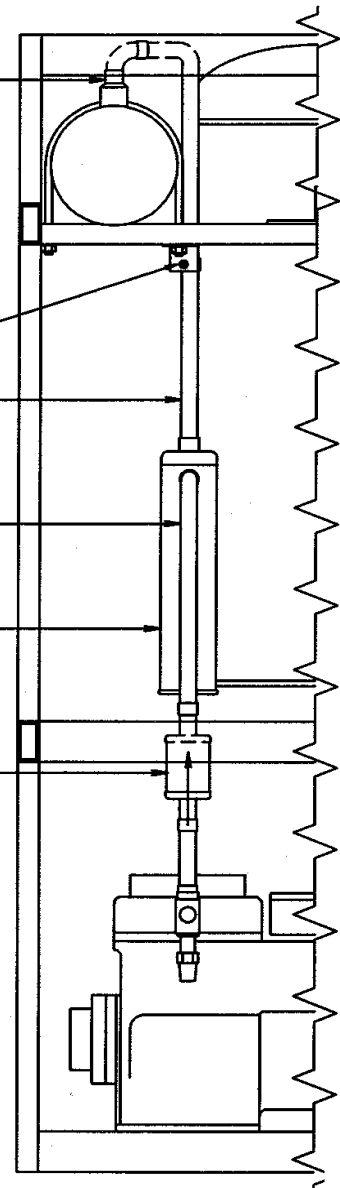
12A-2975M08
MUFFLER ACR #S-6311
1-1/8" OD CONNECTIONS

12A-2215H111
CAP SCREW 3/8" X 1"

12A-2240A1109
3/8" SS HEX NUT

12A-2250A12
3/8" SS CUT WASHER (2 REQD)

12A-2250B109
3/8" SS LOCK WASHER



RIGHT SIDE VIEW