

Vogt Tube - Ice machines P18AL

In 1938, Vogt Ice revolutionized the ice making industry by introducing the world's first automatic sized icemaker. Today, Vogt Tube-Ice machines enjoy a well-earned reputation as the most energy efficient, dependable ice machines on the market.

Heavy-duty industrial construction, automatic operation, and the best warranty in the business make the Vogt ice machines the only "clear" choice for your ice making needs.

Three Ice Sizes Available:

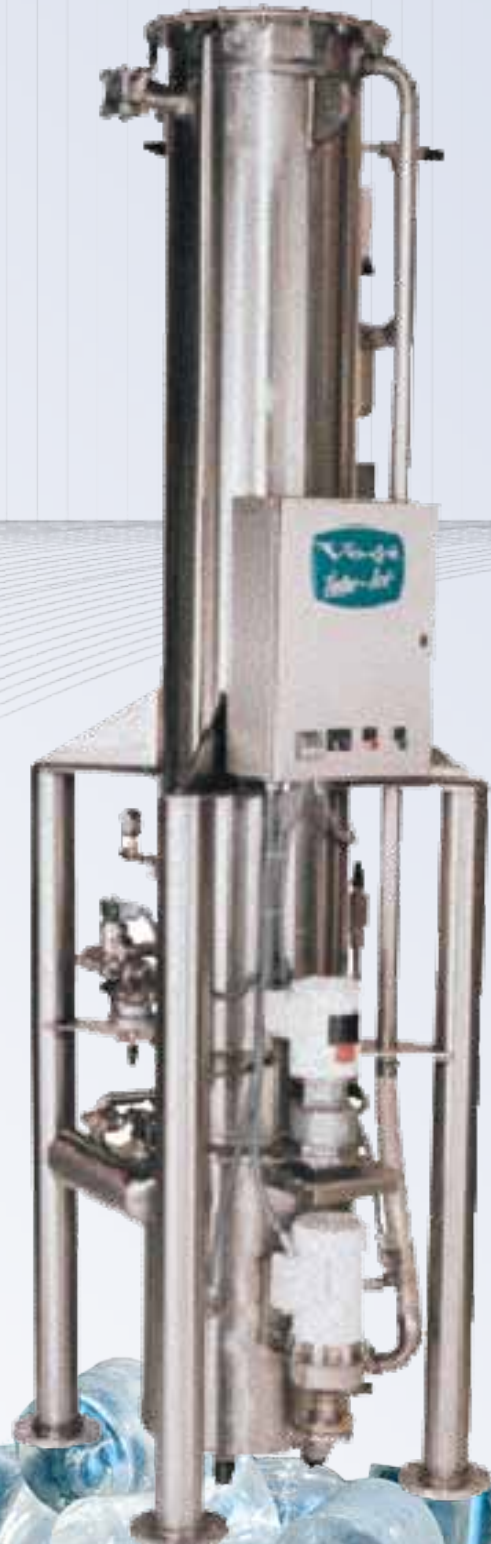
- Cylinder (Tube-Ice)
 - 7/8" Diameter X 1" long
 - 1 1/8" Diameter X 1" long
 - 1 3/8" Diameter X 1" long

P18AL Features:

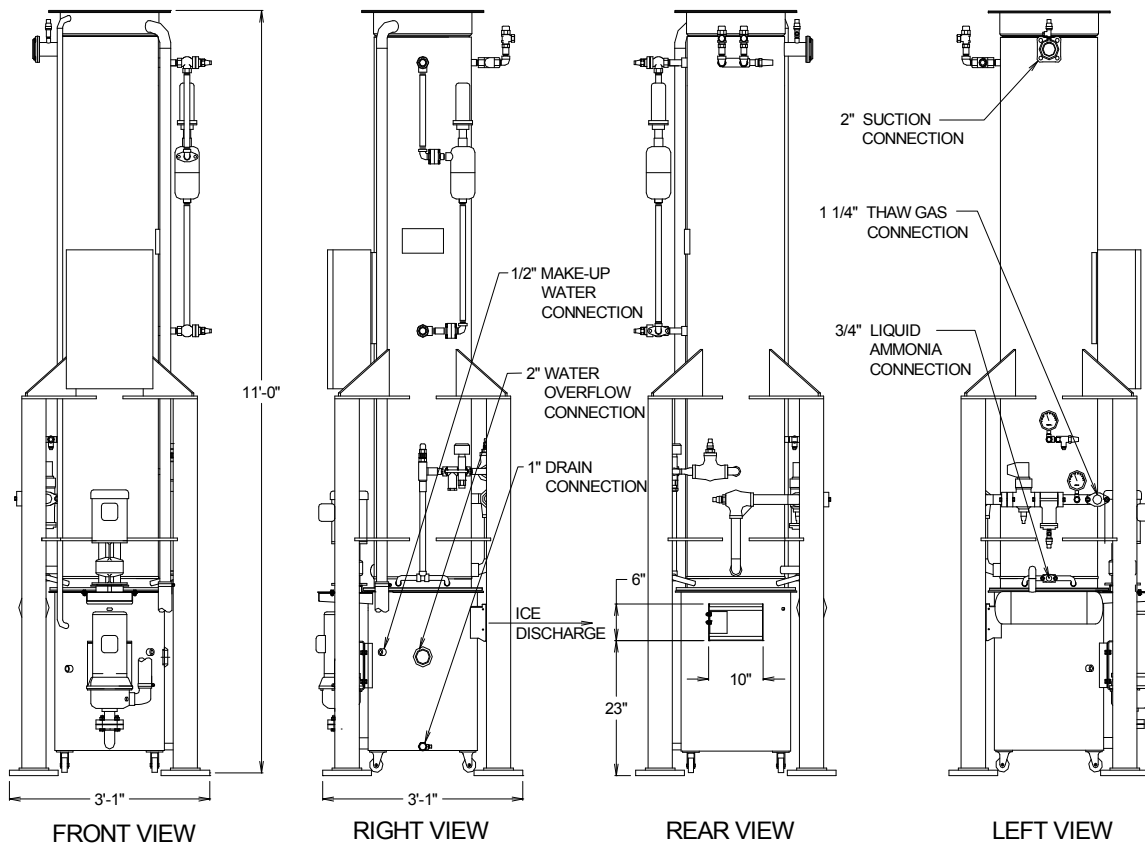
- 25 Year Life expectancy
- Up to 12 tons per day
- 25 Year evaporator warranty
- Stainless Steel Water Pump with TEFC Motor
- Sanitary Design
- Small Footprint
- Manufactured in accordance with the A.S.M.E. code
- Ammonia Refrigerant
- Controls U.L. Approved
- Factory Tested and Certified
- High Energy Efficiency

Options:

- All Stainless Steel Construction with Washdown Duty Motors and Controls
- PLC Controls
- Crushed Ice



Vogt® Tube-Ice Machines



SPECIFICATIONS

MODEL P18AL (Ammonia Refrigerant)

STANDARD CAPACITY, TONS PER 24 HOURS

WATER TEMP.	7/8" DIA. ICE	1 1/8" DIA. ICE	1 3/8" DIA. ICE
80 °F	13.3	9.7	7.2
70 °F	13.9	10.2	7.6
60 °F	14.7	10.8	8.1
50 °F	15.5	11.5	8.6
WEIGHT (LBS)	OPERATING: 3,000 SHIPPING: 2,300	OPERATING: 3,000 SHIPPING: 2,300	OPERATING: 3,000 SHIPPING: 2,300
STANDARD ELECTRICAL	230 V, 3P, 60 Hz - 460V, 3P, 60 Hz - 400V, 3P, 50 Hz (OPTIONAL ELECTRICAL ARRANGEMENTS ON REQUEST)		

CAPACITY TABLE, TONS PER 24 HOURS (AT SUCTION TEMPERATURE °F)

WATER TEMPERATURE	0			5			15			20		
	7/8"	1 1/8"	1 3/8"	7/8"	1 1/8"	1 3/8"	7/8"	1 1/8"	1 3/8"	7/8"	1 1/8"	1 3/8"
80 °F	17.2	12.9	9.8	15.3	11.4	8.5	11.0	7.9	5.8	8.4	6.0	4.3
70 °F	17.9	13.6	10.3	16.0	12.0	9.0	11.6	8.4	6.1	8.9	6.3	4.6
60 °F	18.8	14.3	10.9	16.8	12.6	9.5	12.2	8.9	6.5	9.4	6.7	4.9
50 °F	19.2	15.1	11.6	17.7	13.4	10.1	12.9	9.4	7.0	10.0	7.2	5.2

NOTE: STANDARD CAPACITY BASED ON SUCTION TEMPERATURE OF 10 °F AND AN AMBIENT (AIR) TEMPERATURE OF 90 °F

Vogt reserves the right to change designs and specifications without notice.

Operating Conditions:

The ice machine shall not be subjected to an atmospheric temperature lower than 50 °F nor higher than 90 °F without effect on performance. Water for condensing and for ice making purposes shall be non-corrosive.

The water shall be at a constant pressure not less than 30 lbs. at the ice machine location. The condition of the water to make satisfactory ice shall be the responsibility of the purchaser.

Vogt®
TubeIce | Turbo
Engineered to Endure

Vogt Ice, LLC
 1000 West Ormsby Ave.,
 Louisville KY 40210
 Phone: 502-635-3000
 E-mail: info@vogtice.com

