

P34FXL SERIES TUBE-ICE MACHINE

80 Ton per Day R404a Low-Side



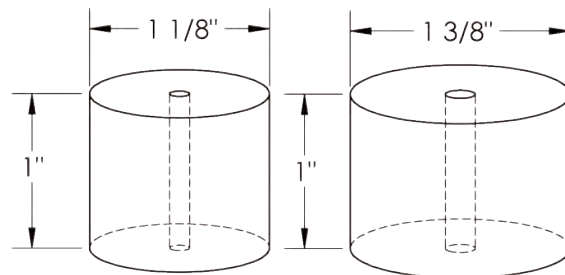
The P34FXL Series with a capacity of 80 tons of ice per day is a low-side Tube-Ice machine designed to operate with a dedicated R404a high-side or on a central refrigeration system. The P34FXL will provide you with many years of dependable service.

Heavy-duty industrial construction, automatic operation, energy efficiency and the best warranty in the business make Vogt Tube-Ice machines the only "clear" choice for your ice making needs.

P34FXL Standard Features:

- ★ 25 Year Evaporator Warranty
- ★ Up to 80 tons of ice per day
- ★ Voltage - 230v.,3p.,60hz.
- ★ Control Voltage - 230v.,1p.,60hz
- ★ UL 508A Industrial Control Panel
- ★ Manufactured in accordance with A.S.M.E. code
- ★ Standard ice length 1"

P34FXL Tube-Ice Available in Two Ice Sizes:



Not to Scale

P34FXL Options:

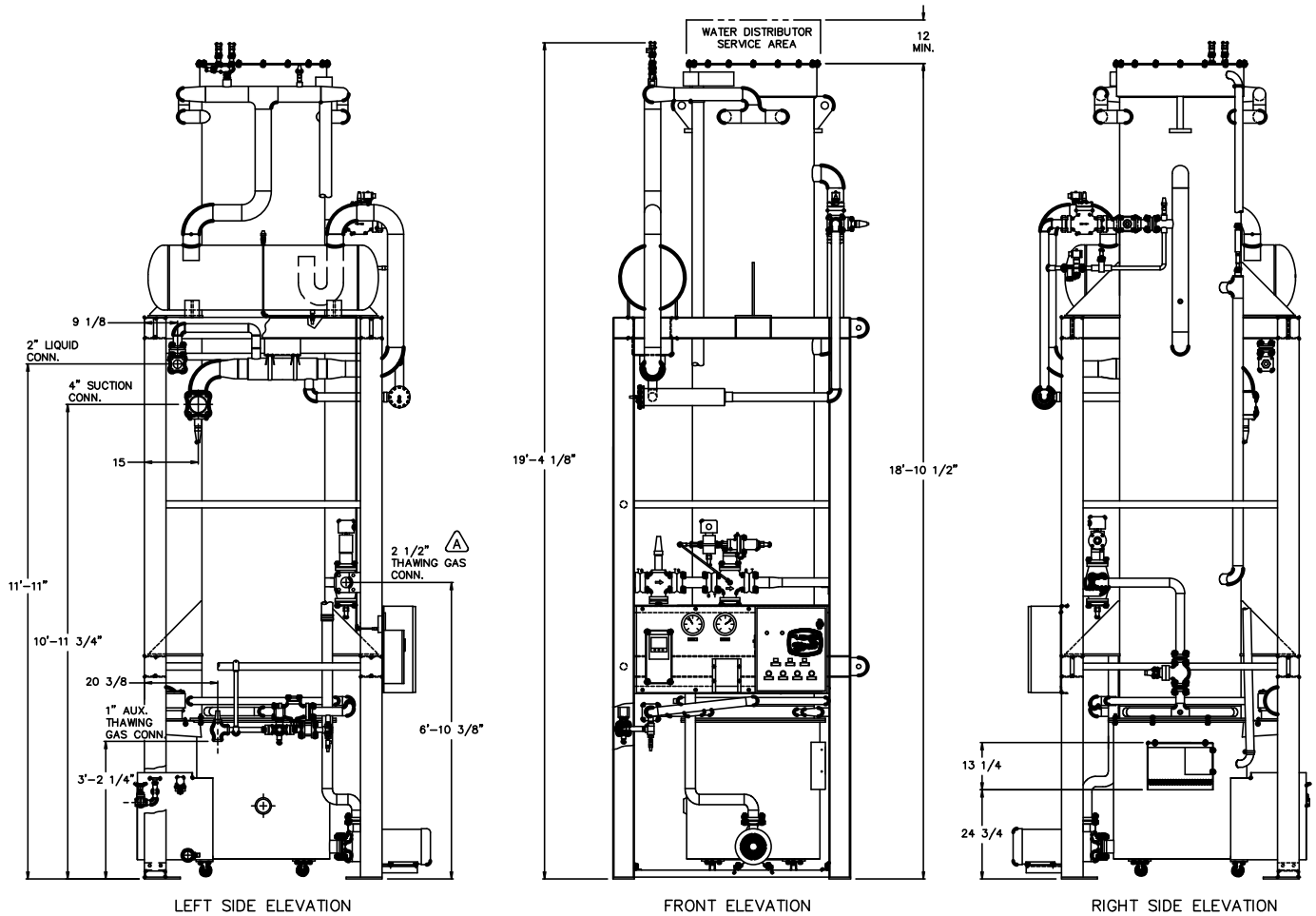
- ★ Voltage -460 v.,3p.,60hz.
- ★ Voltage - 400v.,3p.,50hz.
- ★ Voltage - 575v.,3p.,60hz.
- ★ 120v Controls
- ★ PLC Control panel (programmable logic controller)
- ★ Power monitor
- ★ Cutter for 1-1/2" long ice
- ★ Cutter for crushed ice
- ★ All stainless steel
- ★ "CE" Approval (400v, 50hz only)
- ★ Canadian Registration Number (CRN)
- ★ R22 Operation
- ★ R507 Operation

Operating Conditions

The ice machine shall not be subjected to an atmospheric temperature lower than 50 ° F. (10 ° C.) nor higher than 90 ° F. (32 ° C.) without effect on performance. Water for condensing or ice making purposes shall be non-corrosive.

The water shall be at a constant pressure no less than 30lbs. at the ice machine location. The condition of the water to make satisfactory ice shall be the responsibility of the purchaser.





P34FXL STANDARD CAPACITY TONS OF ICE PER 24 HOURS @ 10 ⁰ F SUCTION (Flooded)								
Water Temperature	1-1/8" Diameter Ice				1-3/8" Diameter Ice			
80 ⁰ F	63.5				51.2			
70 ⁰ F	66.5				53.8			
60 ⁰ F	69.8				56.6			
50 ⁰ F	73.4				59.8			
Shipping Weight	12,500				12,200			
Operating Weight	16,400				16,100			
CAPACITY TABLE, TONS OF ICE PER 24 HOURS (AT SUCTION TEMPERATURE ⁰ F) (Flooded)								
Water Temperature	0 ⁰ F		5 ⁰ F		15 ⁰ F		20 ⁰ F	
	1-1/8"	1-3/8"	1-1/8"	1-3/8"	1-1/8"	1-3/8"	1-1/8"	1-3/8"
80 ⁰ F	83.6	68.7	74.0	60.3	52.1	41.5	39.5	31.1
70 ⁰ F	87.2	71.9	77.4	63.2	54.6	43.7	41.5	32.8
60 ⁰ F	91.2	75.4	81.0	66.4	57.5	46.1	43.8	34.6
50 ⁰ F	95.4	79.3	85.0	69.9	60.6	48.7	36.7	36.7
Capacity based on 50 gallon blowdown per cycle with 4 minute harvest.								