



In 1938, Vogt revolutionized the ice making industry by introducing the world's first automatic sized icemaker, the Vogt Tube-Ice machine. Today, Vogt Ice offers a variety of ice options including Tube-Ice, fragmented, and cracked ice produced by the VT Series.

The VT100 Series with a capacity of 5 tons of cracked ice per day is a lower cost per pound ice machine and the preferred choice of ice machine for many industrial applications.

### VT100 Standard Features:

- \* Voltage - 208/230v.,3p.,60hz.
- \* Refrigerant 404a
- \* Bitzer compressor for efficient operation
- \* Electronic ice bin thermostat
- \* Air-cooled operation with remote condenser
- \* PLC Controls featuring:
  - Controlled restart after power outage to prevent freeze ups
  - Adjustable ice thickness
  - Cutter delay at start of harvest
  - Error code notification to identify problem area quickly
- \* Patented roto molded, sanitary water distributor
- \* Sealed Chopper bar
  - Sealed ball bearings to prevent leaks
  - Direct drive gear reducer - no belts
- \* UL Approved control panel
- \* Standard casings are hot dipped Galvanneal for long lasting maintenance free corrosion protection

Capacity rating is average for the model.  
 Individual machines may vary +/- 5%.  
 Capacity based on ambient (air) temperature of 90 ° F. (32 ° C.).  
 Capacity reduced 17% for 50hz. operation.

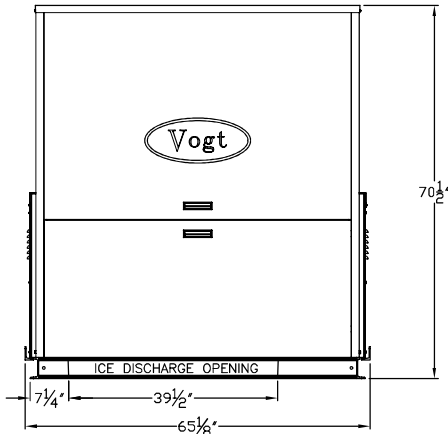
### VT100 Series Options:

- \* Voltage - 460v.,3p.,60hz
- \* Voltage - 400v.,3p.,50hz
- \* Voltage - 200v.,3p.,50hz.
- \* Remote switch box
- \* Canadian Registration Number (CRN)
- \* Export crating (ISPM-15 Rated)
- \* Power monitor
- \* Epoxy coated condenser
- \* Stainless steel casings ice making section
- \* Stainless steel casings for compressor compartment
- \* Skid mounted self contained unit with condenser
- \* Water cooled condenser
- \* Available as low-side only unit
- \* CE approval (400v.,3p.,50hz. only)

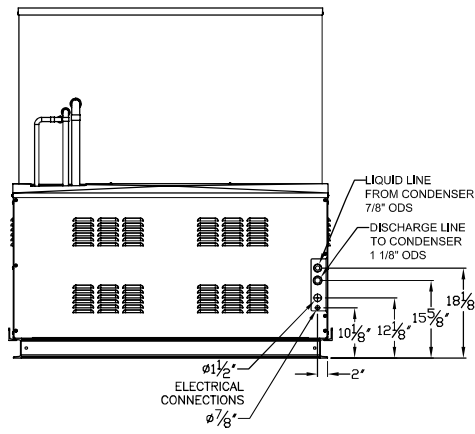
Air Cooled Ice Machine Electrical Information					System Charge (lbs)	Ice Capacity			Ice Making Water		
Voltage	F.L.A.	Min. Ampacity	Max. Fuse	Service to Machine		Makeup Water Temp (Deg. F)	Ice / 24 hrs (lbs)	Ice / cycle (lbs)	Usage/100 lbs of Ice (gal)	Makeup Water Flow Rate	
										(gpm)	(gph)
208/230	79.1	94.6	160	125	40	70	9600	50	12.0	0.80	48.0
460	41.7	49.4	80	125	40	70	9600	50	12.0	0.80	48.0

\* Note: A fused disconnect must be provided near the machine  
 Capacities based on 90 Deg F. Ambient - water flows based on zero blowdown

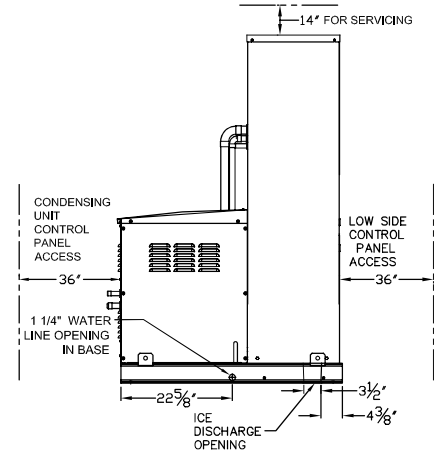




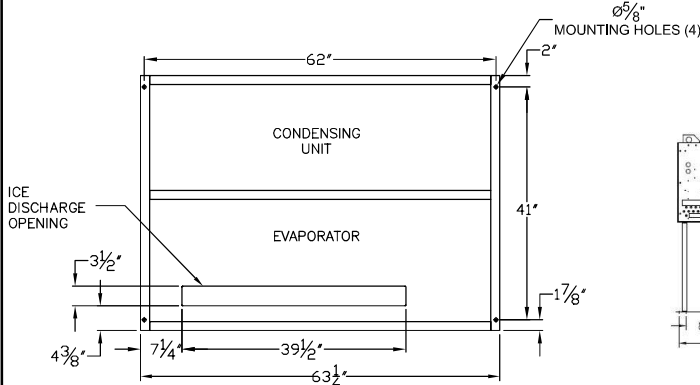
Front View



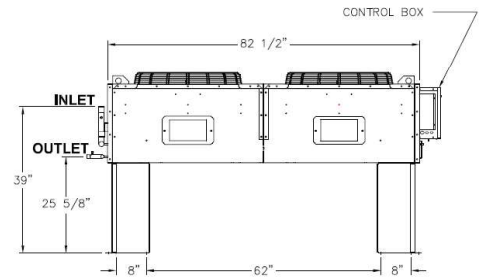
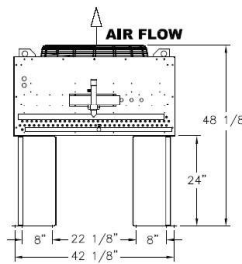
Rear View  
(Shown with optional compressor casings)



Side View



Footprint & Ice Discharge Location



Air Cooled Condenser (Keeprite KCM024)

Dimensions						Shipping Weight	
Ice Machine			Remote AC Condenser (Keeprite condenser)			Package Machine	Remote Condenser
Height	Width	Depth	Height	Width	Depth	(lbs)	(lbs)
71"	63"	45"	48 1/8"	82 1/2"	42 1/8"	1850	485

Voltage	Motor Information												
	Water Pump			Cutter Drive			Condenser Fan			Compressor			
	H.P.	F.L.A.	Phase	H.P.	F.L.A.	Phase	H.P.	Total F.L.A.	Phase	H.P.	L.R.A	R.L.A.	Phase
208/230	1/20	1.0	1	1/2	3.7	1	2@ 3/4	8.6	1	23	352	63.8	3
460	N/A	N/A	N/A	N/A	N/A	N/A	2@ 3/4	6.2	3	23	176	32.1	3

**Operating Conditions**

The ice machine shall not be subjected to an atmospheric temperature lower than 50 ° F. (10 ° C.) nor higher than 90 ° F. (32 ° C.) without effect on performance. Water for condensing or ice making purposes shall be non-corrosive.

The water shall be at a constant pressure no less than 30lbs. at the ice machine location. The condition of the water to make satisfactory ice shall be the responsibility of the purchaser.